



Campus Core Area

- 6 buildings for a total of 420,000 sq. ft.
- Development of flexible open space
- Integration of art on campus
- Flexible performance and event spaces
- Preservation of scenic views
- Opportunities for green roofs
- Living buildings
- Community destination

Regional Business Center

The campus will feature a mix of businesses and office uses that serve regional markets and offer significant employment opportunities.

Examples of complementary retail:

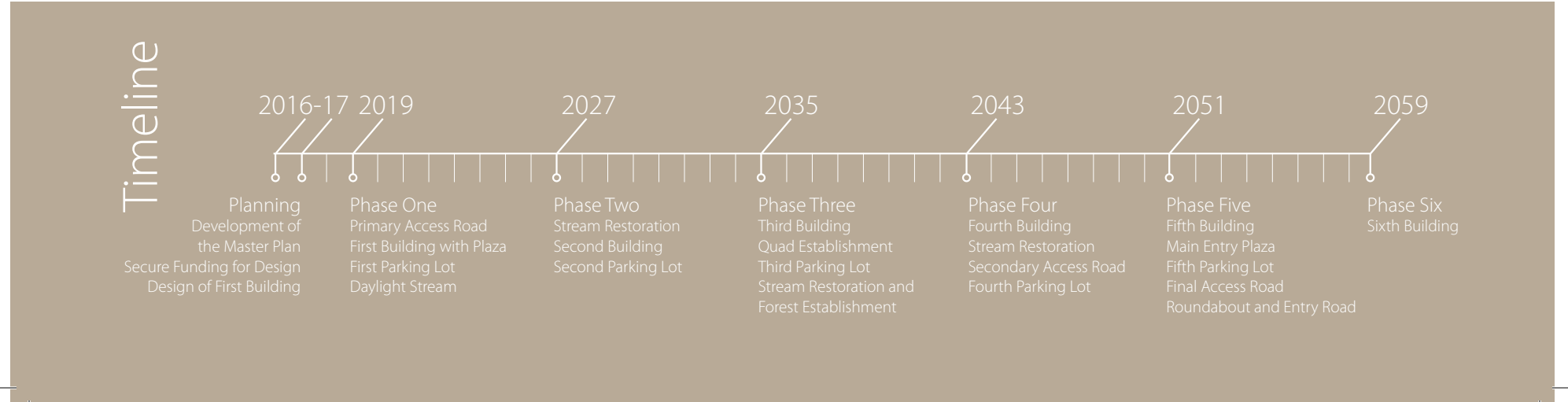
- | | |
|-------------------------|-----------------------------------|
| • Childcare | • Salon |
| • Grocery/Market | • Bank |
| • Restaurant | • Coffee Shop |
| • Book and Supply Store | • Pharmacy |
| • Laundromat | • Commercial/Institutional Zoning |

Green Spaces

- Integrated stormwater management using LID techniques
- Stream restoration and management of downstream flooding
- Restoration of Allen and McCormick creeks
- Create wildlife habitat corridors
- Rehabilitation of existing wetlands and forest
- Connections to regional path systems
- Opportunities for learning and recreation
- Partnerships with state and federal agencies

Environmental & Agricultural Sciences

- Stream restoration
- Farm-to-table food practices
- Experimental test plots
- Student-run greenhouses
- Sustainable agriculture practices
- Environmental presentation
- Outdoor classroom/labs



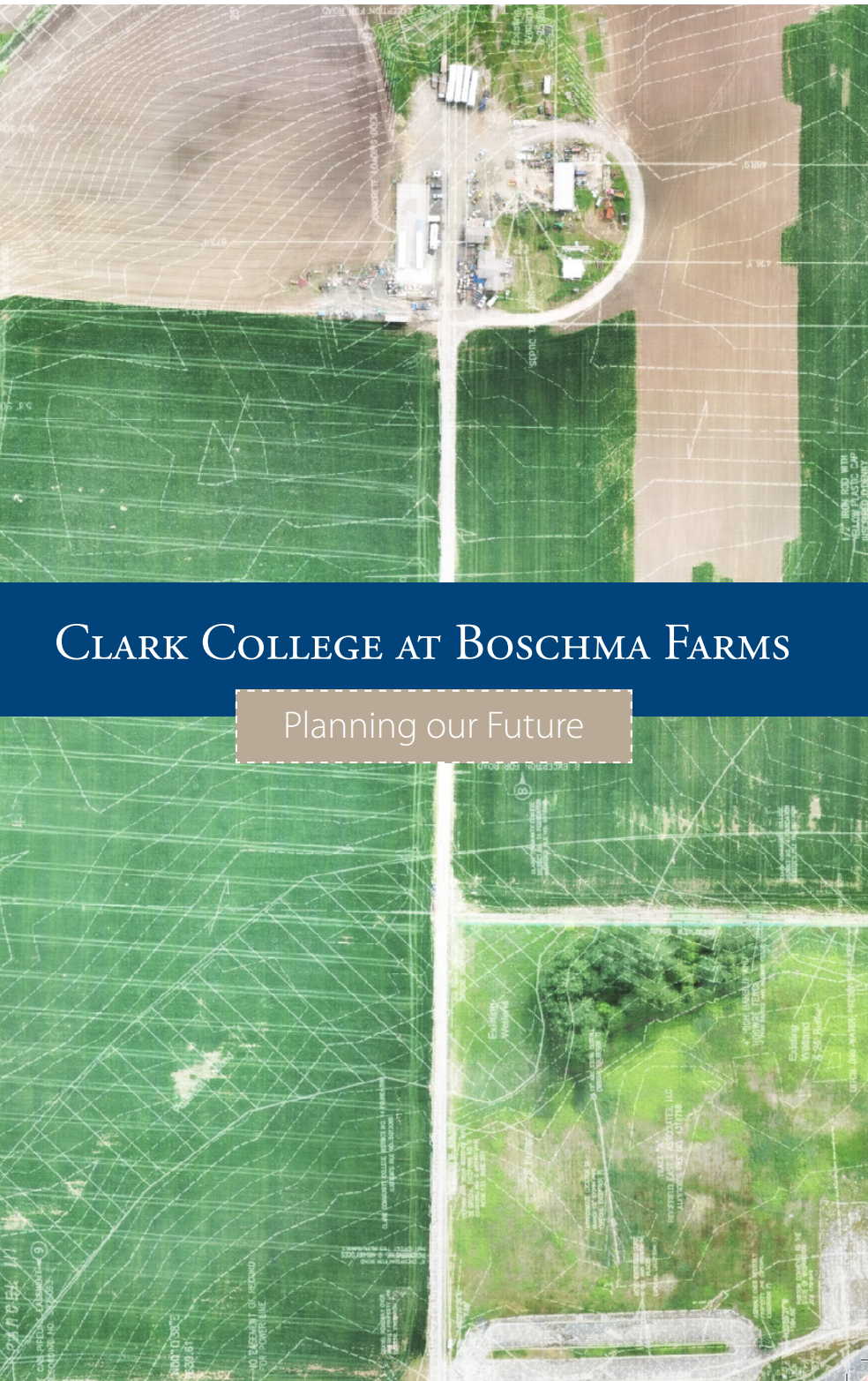


While planning Clark College at Boschma Farms, it has been important to honor the agricultural heritage of the land while setting a high standard of environmental sustainability for future development. The college will undertake wetland restoration and the creation of wildlife habitat corridors during the building process. Once completed, the campus will offer students outdoor classrooms and student-run greenhouses and farms providing local farm-to-table meals.

Working to Reclaim the Natural Habitat

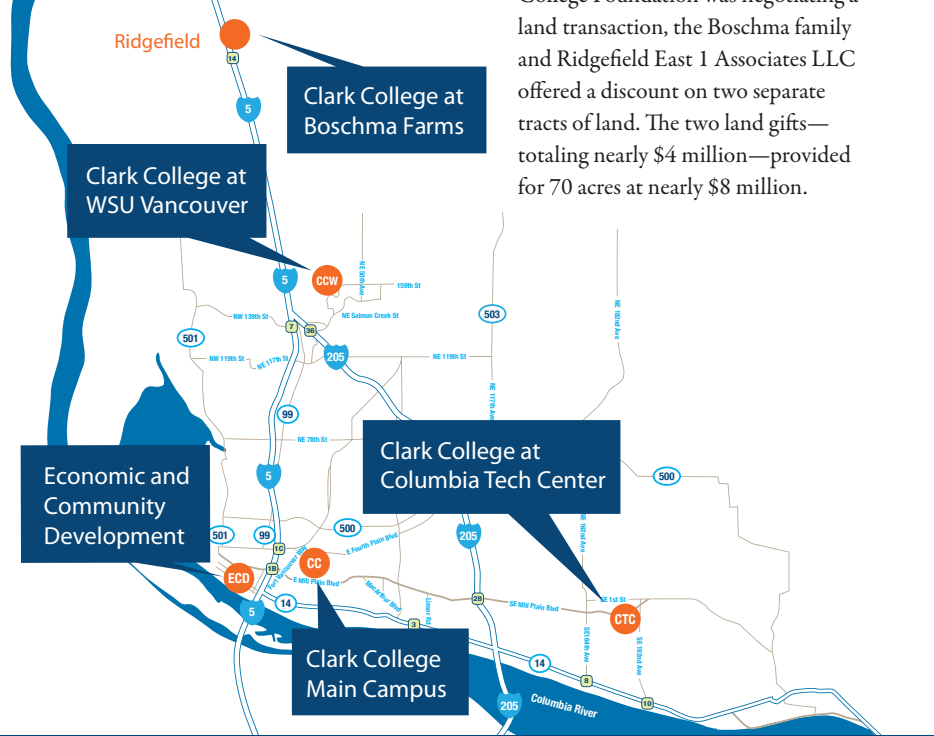
Clark College at Boschma Farms is expected to be a boon for the region and represents a long-term visionary chapter for the college. The college's 2007 Facilities Master Plan identified north county as an area where the college could fulfill its mission of providing access to an underserved area of the service district. This aligns with the Washington State Board of Community and Technical College's prioritized building projects for the upcoming biennium.

Clark College at Boschma Farms



Why Boschma Farms?

Hank and Bernice Boschma, originally from Holland, settled in Ridgefield in 1965 where they purchased land to start a dairy farm. While living there, each took a citizenship course at Clark in preparation for the national exam. Later, their daughter Gerry attended Clark. In 2014, while Clark College Foundation was negotiating a land transaction, the Boschma family and Ridgefield East 1 Associates LLC offered a discount on two separate tracts of land. The two land gifts—totaling nearly \$4 million—provided for 70 acres at nearly \$8 million.



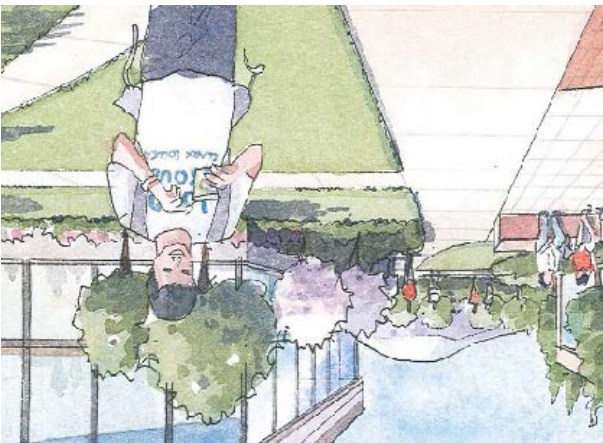
A Collaborative Vision

Through a series of stakeholder meetings and community forums, the master plan for Clark College at Boschma Farms was created in collaboration with north county community members, local businesses, Clark College faculty and staff, Mackay + Sposito, and Clark College Foundation. The new campus will embrace the heritage of north Clark County while providing a new vision for the future.

www.clark.edu/cc/boschma

The vision for the campus is that it will evolve over time and include satellite instructional facilities containing classrooms, health and science labs, professional labs, faculty and staff offices, digital study areas, and support spaces for high-demand degrees, such as advanced manufacturing. The programs offered at the satellite campus will help provide economic security and workforce development to students in the surrounding community.

Creating Opportunities for North Clark County



Taking Ridgefield's views of Mt. St. Helens, Mt. Rainier, Mt. Adams and Mt. Hood into consideration, the campus layout will provide views framing the mountains for students and campus visitors.

